

Holiday lettings Calpe "Renato Murcia"

For holiday in the Sun in Calpe near the city of Alicante



House, semi-detached, 1 floor, separate entrance, in a(an) Private property

Setting : quiet, tranquil

Capacity : from 4 to 5 person(s)

Bedroom(s) : 2

Room(s) : 4



Meublés de Tourisme
Case & Appartamenti per vacanze

Calpe - Province of Alicante - Valencian Community
Spain

Advert No. 61744

www.iha.co.in



>> HOLIDAY LETTINGS

BOOK DIRECT WITH THE OWNERS

Holiday lettings



House, semi-detached, 1 floor, separate entrance, in a(an) Private property

- **Ideal for all age groups, family**
- **View :** unobscured, not overlooked, swimming pool, garden/park, fantastic sunset
- **Setting :** quiet, tranquil
- **Exposure :** South

" Apartment of 80 m2 kitchen, air conditioning, 2 rooms, bathroom, terrace, reserved covered parking, sunny pool, kitchen equipped with fridge/freezer, washing machine, dishwasher, micro wave, coffee machine, and dishes sufficient for 5 people, outdoors you can make your barbecues unless it y of the wind of course, located less than 4 minutes from the sandy beaches, at the foot of the rock of Ifach, symbol of the Costa Blanca, A 20 km water amusement parks has 3 minutes shops such as Lidl, Aldi, Meradona Consum and a range of restaurants. You will also find a Calpe tracks cycle down to the beaches, trails planned for stroll, a paseo of several kilometres, we are on site when needed. "

Assets

- **Swimming pool :**
Shared swimming pool, rectangular (length 14m, width 8m), step ladder, outside shower (open from '15 june' till '30 september')
- **Parking :**
Parking uncovered : 1 reserved bay.
- **Advantages :**
Pétanque set(s)

Surroundings & location



Seaside



Horse riding



Fishing

" You will find bicycle mites, travel health, mountaineering, and all sports and games related has water, in our tourist area is Calpe "

Leisure

- **Leisure activities less than 20 km / 12 miles :**

Bathing, pedalo, snorkelling, scuba diving, sailing, golf, tennis, boat trips, horse trekking, fishing, angling, pétanque pitch

- **Supervised :**

Sailing school, dive school

Surroundings

- **Locality :**

Sea/ocean 1,5km
Sandy beach 1,5km
Shingle beach 2km
Rocky beach 2km
Public swimming pool 3km
Marina 3km
Slipway 3km



living room



the house



View from the property

Interior

- **Receive up to :**
from 4 to 5 person(s) (4 adults, 1 children)
- **Liveable floor area :**
80m²
- **Interior layout :**
4 Room(s), 2 bedroom(s), 1 bathroom, 1 WC, living room 18m², separate kitchen, loggia
- **Sleeps - bed(s) :**
1 double bed(s), 2 king-size bed(s), 1 sofa bed(s) 2 pers, 3 single bed(s)
- **Guest facilities :**
T.V., cable/satelite, wifi, Hanging wardrobe, fly screens, partly air conditioned, mobile cool air fan, ceiling paddle fan, Glazed in area, Curtains
- **Appliances :**
Crockery/cuttlery, kitchen utensils, electric coffee maker, toaster, juicer, food processor, gas cooker, oven, micro-wave oven, extractor hood, refridgerator, freezer, dish washer, washing machine, iron, ironing board

Exterior

- **Ground surface :**
600m²
- **Outside accommodation :**
Terrace, balcony
- **Outside setting :**
Enclosed grounds
- **Outside amenities :**
Summer living area, BBQ, garden table(s), parasol, garden seated area, outside shower facilities



watersports nearby

Services

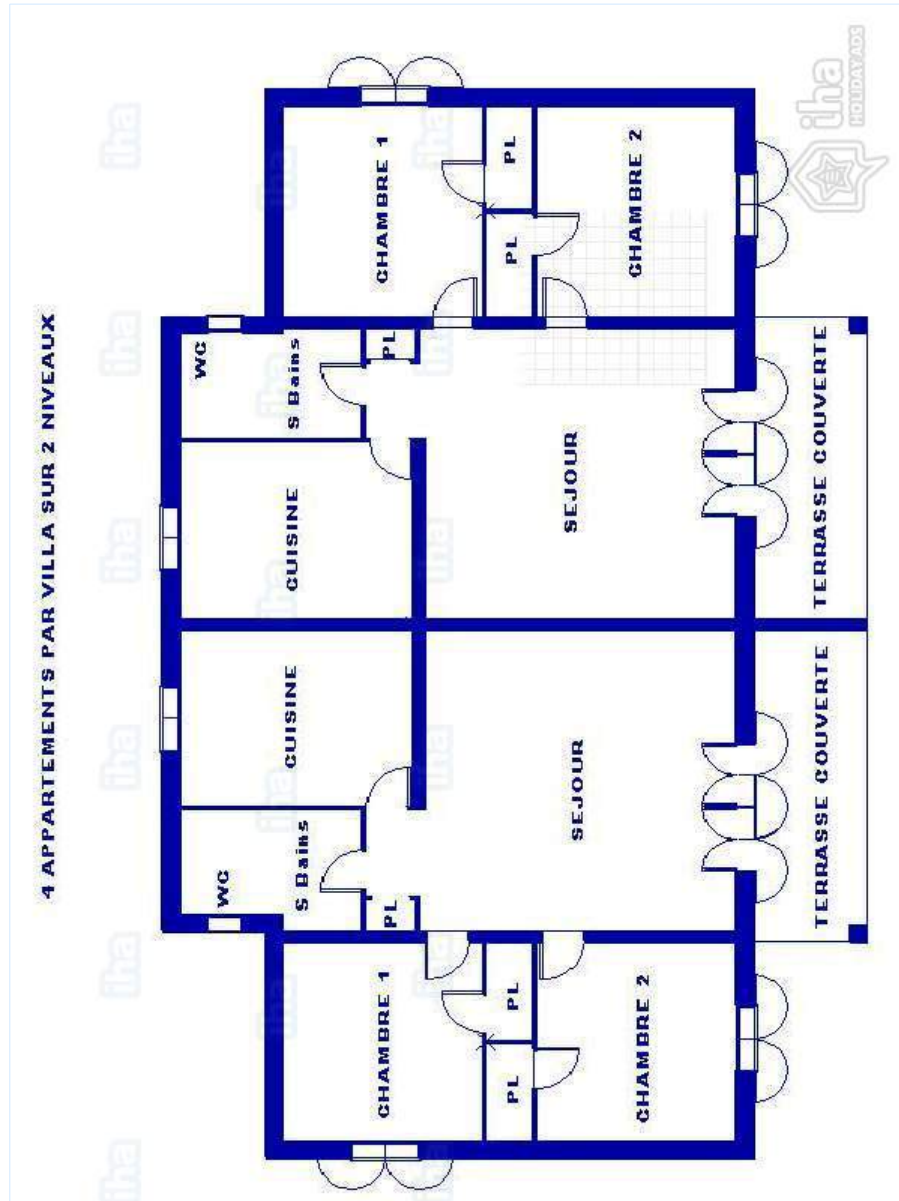
- **Washing :**
Sheets supplement
- **House :**
Cleaning on departure supplement (+ Rs.5598*), Parking

For your guidance

- **For your guidance**
Children welcome
Pets accepted under certain conditions (ask the owner)
Present on site : pets
Mobile telephone network coverage, personal transport advisable
Water : hot/cold
Local voltage supply : 220-240V / 50Hz
Electricity supply : mains



Floor plan



www.ihaco.in

Photo album - 1



the house



living room



View from the property



watersports nearby

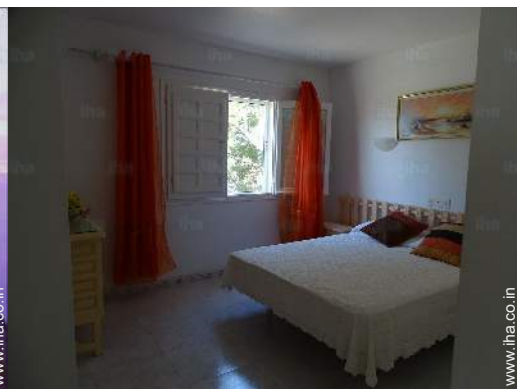
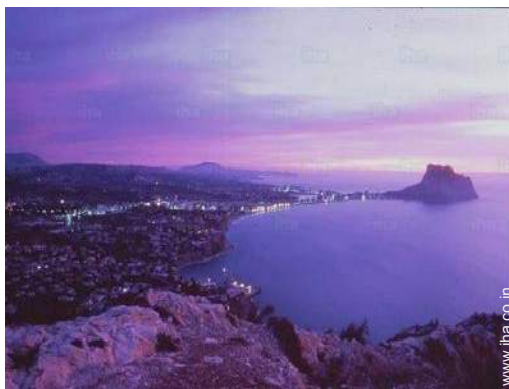
Photo album - 2



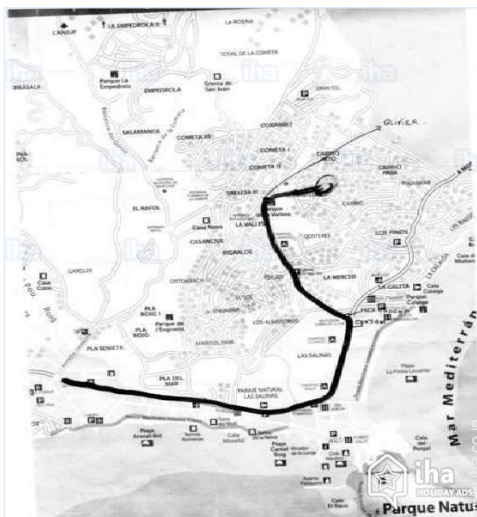
view from the kitchen



House




Route map



Location & Access

" To get a Calpe by motorway: Exit 63 Benissa, Calpe Alicante Attention head out of Valencia stay on the A7 then AP7 direction Gandía then exit 63 "

 GPS coordinates in degrees, minutes, seconds: Latitude 38° 39'44"N - Longitude 0°4'18"E ([Dwelling](#))

Address

→ Buenavista 4 E
03710 Calpe

• Motorway (junction) A7 - sortie 63

→ Canor, Province of Alicante, Valencian Community, Spain
→ Distance : 10km
→ Time : 10'

• Airport Alicante

→ Alicante, Province of Alicante, Valencian Community, Spain
→ Distance : 70km
→ Time : 50'

- Alicante : (60km)
- Benidorm : (20km)
- Valencia : (100km)

Contact

Spoken languages



Location



Holiday lettings Calpe - Spain "Renato Murcia"

[Book now](#)

Availability calendar - from : may 2019

| May | W | Th | F | Sa | Su | M | Tu | W | Th | F | Sa | Su | M | Tu | W | Th | F | Sa | Su | M | Tu | W | Th | F | | | | | | | |
|------|---|----|---|----|----|---|----|---|----|----|----|----|----|----|----|----|----|----|----|----|----|----|----|----|----|----|----|----|----|----|----|
| 2019 | 1 | 2 | 3 | 4 | 5 | 6 | 7 | 8 | 9 | 10 | 11 | 12 | 13 | 14 | 15 | 16 | 17 | 18 | 19 | 20 | 21 | 22 | 23 | 24 | 25 | 26 | 27 | 28 | 29 | 30 | 31 |
| | | | | | | | | | | | | | | | | | | | | | - | - | - | - | - | - | - | - | - | - | - |

| June | Sa | Su | M | Tu | W | Th | F | Sa | Su | M | Tu | W | Th | F | Sa | Su | M | Tu | W | Th | F | Sa | Su | | | | | | | |
|------|----|----|---|----|---|----|---|----|----|----|----|----|----|----|----|----|----|----|----|----|----|----|----|----|----|----|----|----|----|----|
| 2019 | 1 | 2 | 3 | 4 | 5 | 6 | 7 | 8 | 9 | 10 | 11 | 12 | 13 | 14 | 15 | 16 | 17 | 18 | 19 | 20 | 21 | 22 | 23 | 24 | 25 | 26 | 27 | 28 | 29 | 30 |
| | - | - | - | - | - | - | - | - | - | - | - | - | - | - | - | - | - | - | - | - | - | - | - | - | - | - | - | - | - | - |

| Jul | M | Tu | W | Th | F | Sa | Su | M | Tu | W | Th | F | Sa | Su | M | Tu | W | Th | F | Sa | Su | M | Tu | W | Th | F | Sa | Su | M | Tu | W | |
|------|---|----|---|----|---|----|----|---|----|----|----|----|----|----|----|----|----|----|----|----|----|----|----|----|----|----|----|----|----|----|----|---|
| 2019 | 1 | 2 | 3 | 4 | 5 | 6 | 7 | 8 | 9 | 10 | 11 | 12 | 13 | 14 | 15 | 16 | 17 | 18 | 19 | 20 | 21 | 22 | 23 | 24 | 25 | 26 | 27 | 28 | 29 | 30 | 31 | |
| | - | - | - | - | - | - | - | - | - | - | - | - | - | - | - | - | - | - | - | - | - | - | - | - | - | - | - | - | - | - | - | - |

| Aug | Th | F | Sa | Su | M | Tu | W | Th | F | Sa | Su | M | Tu | W | Th | F | Sa | Su | M | Tu | W | Th | F | Sa | Su | M | Tu | W | Th | F | Sa | |
|------|----|---|----|----|---|----|---|----|---|----|----|----|----|----|----|----|----|----|----|----|----|----|----|----|----|----|----|----|----|----|----|---|
| 2019 | 1 | 2 | 3 | 4 | 5 | 6 | 7 | 8 | 9 | 10 | 11 | 12 | 13 | 14 | 15 | 16 | 17 | 18 | 19 | 20 | 21 | 22 | 23 | 24 | 25 | 26 | 27 | 28 | 29 | 30 | 31 | |
| | - | - | - | - | - | - | - | - | - | - | - | - | - | - | - | - | - | - | - | - | - | - | - | - | - | - | - | - | - | - | - | - |

| Sep | Su | M | Tu | W | Th | F | Sa | Su | M | Tu | W | Th | F | Sa | Su | M | Tu | W | Th | F | Sa | Su | M | | | | | | | | |
|------|----|---|----|---|----|---|----|----|---|----|----|----|----|----|----|----|----|----|----|----|----|----|----|----|----|----|----|----|----|----|---|
| 2019 | 1 | 2 | 3 | 4 | 5 | 6 | 7 | 8 | 9 | 10 | 11 | 12 | 13 | 14 | 15 | 16 | 17 | 18 | 19 | 20 | 21 | 22 | 23 | 24 | 25 | 26 | 27 | 28 | 29 | 30 | |
| | - | - | - | - | - | - | - | - | - | - | - | - | - | - | - | - | - | - | - | - | - | - | - | - | - | - | - | - | - | - | - |

| Oct | Tu | W | Th | F | Sa | Su | M | Tu | W | Th | F | Sa | Su | M | Tu | W | Th | F | Sa | Su | M | Tu | W | Th | F | Sa | Su | M | Tu | W | Th | |
|------|----|---|----|---|----|----|---|----|---|----|----|----|----|----|----|----|----|----|----|----|----|----|----|----|----|----|----|----|----|----|----|---|
| 2019 | 1 | 2 | 3 | 4 | 5 | 6 | 7 | 8 | 9 | 10 | 11 | 12 | 13 | 14 | 15 | 16 | 17 | 18 | 19 | 20 | 21 | 22 | 23 | 24 | 25 | 26 | 27 | 28 | 29 | 30 | 31 | |
| | - | - | - | - | - | - | - | - | - | - | - | - | - | - | - | - | - | - | - | - | - | - | - | - | - | - | - | - | - | - | - | - |

| Nov | F | Sa | Su | M | Tu | W | Th | F | Sa | Su | M | Tu | W | Th | F | Sa | Su | M | Tu | W | Th | F | Sa | | | | | | | | |
|------|---|----|----|---|----|---|----|---|----|----|----|----|----|----|----|----|----|----|----|----|----|----|----|----|----|----|----|----|----|----|---|
| 2019 | 1 | 2 | 3 | 4 | 5 | 6 | 7 | 8 | 9 | 10 | 11 | 12 | 13 | 14 | 15 | 16 | 17 | 18 | 19 | 20 | 21 | 22 | 23 | 24 | 25 | 26 | 27 | 28 | 29 | 30 | |
| | - | - | - | - | - | - | - | - | - | - | - | - | - | - | - | - | - | - | - | - | - | - | - | - | - | - | - | - | - | - | - |

| Dec | Su | M | Tu | W | Th | F | Sa | Su | M | Tu | W | Th | F | Sa | Su | M | Tu | W | Th | F | Sa | Su | M | Tu | | | | | | | |
|------|----|---|----|---|----|---|----|----|---|----|----|----|----|----|----|----|----|----|----|----|----|----|----|----|----|----|----|----|----|----|----|
| 2019 | 1 | 2 | 3 | 4 | 5 | 6 | 7 | 8 | 9 | 10 | 11 | 12 | 13 | 14 | 15 | 16 | 17 | 18 | 19 | 20 | 21 | 22 | 23 | 24 | 25 | 26 | 27 | 28 | 29 | 30 | 31 |
| | - | - | - | - | - | - | - | - | - | - | - | - | - | - | - | - | - | - | - | - | - | - | - | - | - | - | - | - | - | - | - |

| Jan | W | Th | F | Sa | Su | M | Tu | W | Th | F | Sa | Su | M | Tu | W | Th | F | Sa | Su | M | Tu | W | Th | F | Sa | Su | M | Tu | W | Th | F | |
|------|---|----|---|----|----|---|----|---|----|----|----|----|----|----|----|----|----|----|----|----|----|----|----|----|----|----|----|----|----|----|----|---|
| 2020 | 1 | 2 | 3 | 4 | 5 | 6 | 7 | 8 | 9 | 10 | 11 | 12 | 13 | 14 | 15 | 16 | 17 | 18 | 19 | 20 | 21 | 22 | 23 | 24 | 25 | 26 | 27 | 28 | 29 | 30 | 31 | |
| | - | - | - | - | - | - | - | - | - | - | - | - | - | - | - | - | - | - | - | - | - | - | - | - | - | - | - | - | - | - | - | - |

| Feb | Sa | Su | M | Tu | W | Th | F | Sa | Su | M | Tu | W | Th | F | Sa | Su | M | Tu | W | Th | F | Sa | | | | | | | | | |
|------|----|----|---|----|---|----|---|----|----|----|----|----|----|----|----|----|----|----|----|----|----|----|----|----|----|----|----|----|----|---|---|
| 2020 | 1 | 2 | 3 | 4 | 5 | 6 | 7 | 8 | 9 | 10 | 11 | 12 | 13 | 14 | 15 | 16 | 17 | 18 | 19 | 20 | 21 | 22 | 23 | 24 | 25 | 26 | 27 | 28 | 29 | | |
| | - | - | - | - | - | - | - | - | - | - | - | - | - | - | - | - | - | - | - | - | - | - | - | - | - | - | - | - | - | - | - |



Holiday lettings Valencian Community - Calpe "Renato Murcia"

10
[Book now](#)






Availability calendar - from : february 2020

| Mar | Su | M | Tu | W | Th | F | Sa | Su | M | Tu | W | Th | F | Sa | Su | M | Tu | W | Th | F | Sa | Su | M | Tu | | | | | | | |
|------|----|---|----|---|----|---|----|----|---|----|----|----|----|----|----|----|----|----|----|----|----|----|----|----|----|----|----|----|----|----|----|
| 2020 | 1 | 2 | 3 | 4 | 5 | 6 | 7 | 8 | 9 | 10 | 11 | 12 | 13 | 14 | 15 | 16 | 17 | 18 | 19 | 20 | 21 | 22 | 23 | 24 | 25 | 26 | 27 | 28 | 29 | 30 | 31 |
| - | - | - | - | - | - | - | - | - | - | - | - | - | - | - | - | - | - | - | - | - | - | - | - | - | - | - | - | - | - | - | |

| Apr | W | Th | F | Sa | Su | M | Tu | W | Th | F | Sa | Su | M | Tu | W | Th | F | Sa | Su | M | Tu | W | Th | | | | | | | |
|------|---|----|---|----|----|---|----|---|----|----|----|----|----|----|----|----|----|----|----|----|----|----|----|----|----|----|----|----|----|----|
| 2020 | 1 | 2 | 3 | 4 | 5 | 6 | 7 | 8 | 9 | 10 | 11 | 12 | 13 | 14 | 15 | 16 | 17 | 18 | 19 | 20 | 21 | 22 | 23 | 24 | 25 | 26 | 27 | 28 | 29 | 30 |
| - | - | - | - | - | - | - | - | - | - | - | - | - | - | - | - | - | - | - | - | - | - | - | - | - | - | - | - | - | - | - |

[Month : Next >>](#)

Rental rates - House - from 4 to 5 Person(s)

| Rates | Night | Weekend | week | 2 weeks | Month |
|--|----------------------------|-----------|-------------------------|--------------------------|-------------------------|
|  Low season | - | - | Rs.27988* (Saturday) | Rs.51978* | Rs.55976* (Saturday) |
|  Mid season | - | - | Rs.47980* (Saturday) | Rs.95959* | - |
|  High season | Rs.9596* (Saturday) > 7 | - | Rs.65572* (Saturday) | Rs.131144* (Saturday) | - |
|  Festive specials | - | Rs.23990* | Rs.33586* (Saturday) | - | - |
|  Promotional period | - | - | Rs.31986* (Saturday) | - | - |

(Check-in day) > Minimum Night

[Book now](#)



View from the property



watersports nearby



the house



living room

Booking conditions

• Reservation

- Payment made upon reservation : 30% of rental sum
- Payment balance : on handing over the keys
- Deposit required : Rs.23990*

• rentals

- Service charges to be added
- Cleaning charge levy on departure : Rs.5598*
- Anticipated supplement for :
 - animals

Accepted methods of payment

- International Money Order
- Bank transfer (wire)
- Cash

[▶ Book now](#)

[▶ Contact the owner](#)

Contact directly the property owners

www.iha.co.in
Advert No.
61744
[>> Book now <<](#)

Contact

Spoken languages



* Converted at the rate indicated : €100 = \$116.85 = £89 = Rs.7996.6

Advert No. 61744

www.iha.co.in

