

# Holiday lettings Deltebre "La Salvagina Chalet 57"

House 100 m from the sandy beach as long as your eyes can see in the  
EBRO delta



House, semi-detached, single storey,  
separate entrance, in a(an) Housing  
estate

Setting : natural, characteristic

Capacity : from 1 to 6 person(s)

Bedroom(s) : 2

Room(s) : 5

Deltebre - Province of Tarragona - Catalonia

Spain

Reservation : +32 (0) 4 384 58 22 (Belgium)

Advert No. 65967

www.iha.co.in



## Holiday lettings



House, semi-detached, single storey, separate entrance, in a(an) Housing estate

- **Ideal for all age groups**
- **View :** swimming pool, garden/park
- **Setting :** natural, characteristic
- **Exposure :** East

" 100 m from the sea, very nice functional House with garden and swimming pool (25X13m) to share. Equipped kitchen, dishwasher, dining room, 2 bedrooms, 2 bathrooms of which one with bath, washing machine, air conditioning, terrace with BBQ incorporated into the masonry. WiFi in the complex "

## Assets

- **Swimming pool :**

Shared swimming pool, rectangular (length 25m, width 13m), illuminated, step ladder, outside shower

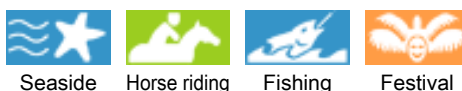
- **Advantages :**

Table football, pétanque pitch



façade

## Surroundings & location



" In addition to the pleasures of the sea, Riomar has many amenities for your stay: swimming pool, bars, restaurants (typical and regional cuisine), tennis courts, discotheque (Deltebre), petanque courts, sea and river fishing, boats, Marina rides... Riomar, hamlet of DELTEBRE, is located in a protected area, near a large well-known natural reserve of ornithologists: the hinterland you will discover old villages lost in the rice paddies. Then crossing vast plantations of orange trees and olive groves, you will arrive at the foot of the mountain (1400 m) site of beautiful walks. For 10 days in the month of August, in the village of La Cava, you can attend a typical Catalan celebration: games, folklore, little cows on the streets... The climate is particularly noteworthy: Riomar region enjoys a microclimate. "

### Leisure

- **Leisure activities less than 20 km / 12 miles :**

Bathing, pedalo, snorkelling, water skiing, jet ski, windsurfing, sailing, tennis, pathway, coastal/forest paths, hiking, mountain bike (path), kite flying, boat trips, horse trekking, fishing, angling, pétanque pitch

- **Attractions and relaxation :**

Bar/pub, restaurant, cinema, park and garden, leisure park, nature reserve, historical site, museum, theatre, local craftshop

### Surroundings

- **Locality :**

Sea/ocean 200m  
Sandy beach 100m  
Public tennis court 7,5km  
Watersports centre 1,5km  
River 1km  
Mountain range 25km  
Marina 1,5km  
Slipway 1,5km  
Jetski slipway 1,5km  
Via ferrata-alpinism 25km

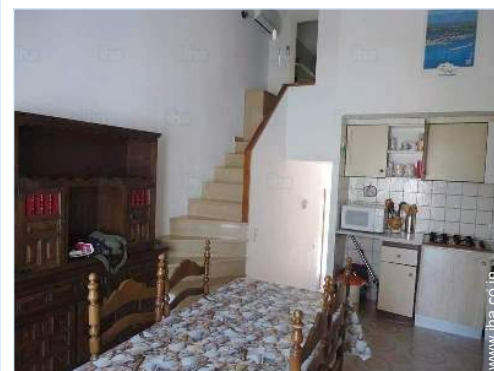
- **Amenities :**

Village centre 7,5km  
Town centre 30km  
Bus stop / bus station 800m  
Bike/mountain bike hire 800m  
Car rental 7,5km  
Boat rental 800m  
Breadshop 800m  
Caterer 7,5km  
Local shops 800m  
Supermarket 7,5km  
High class retailers 7,5km  
Hairdressing salon 7,5km

Internet cafe 7,5km  
Post office 7,5km  
Bank 7,5km  
Cash point 7,5km  
Chemist 7,5km  
Doctor 7,5km  
Nurse 7,5km  
Hospital 25km  
Dispensing clinic 7,5km



Kitchen Area



Interior layout and facilities



living room

### Interior

- **Receive up to :**

from 1 to 6 person(s)

- **Liveable floor area :**

70m<sup>2</sup>

- **Interior layout :**

5 Room(s), 2 bedroom(s), 1 bathroom, 1 shower room, 2 WC, living room 20m<sup>2</sup>, Kitchen Area, dining area, cosy nook

- **Sleeps - bed(s) :**

1 double bed(s), 1 sofa bed(s) 2 pers, 1 single bed(s), 1 bunk beds

- **Guest facilities :**

Fireplace, T.V., hi-fi system, DVD player, wifi, wardrobe, cupboard, fly screens, partly air conditioned, mobile cool air fan, ceiling paddle fan, electric heating, Glazed in area, Curtains, Double glazed, Rolling shutters

- **Appliances :**

Crockery/cutlery, kitchen utensils, cafetiere, electric coffee maker, electric kettle, toaster, juicer, gas cooker, micro-wave oven, extractor hood, refrigerator, freezer, dish washer, washing machine, vacuum cleaner, iron, ironing board

### Exterior

- **Ground surface :**

2500m<sup>2</sup>

- **Outside accommodation :**

Terrace 10m<sup>2</sup>

- **Outside setting :**

Enclosed grounds 2500m<sup>2</sup>, lawn

- **Outside amenities :**

Outside bar, BBQ, garden table(s), 6 garden seat(s), parasol, outside shower facilities, outside toilet facilities



child's room

### Services

- **Washing :**

Blanket(s), Pillows

- **House :**

Garden/swimming pool maintenance, Caretaker/ concierge

### For your guidance

- **For your guidance**

Children welcome

Pets accepted

Mobile telephone network coverage

Water : hot/cold

Local voltage supply : 220-240V / 50Hz



master bedroom

Photo album - 1



façade



Interior layout and facilities



Kitchen Area



living room



master bedroom

Photo album - 2



child's room



bathroom



shower room



shower room



terrace



Fishing



boat trips

Photo album - 3



Seaside



sandy beach



nature reserve



pathway



nearby



pathway




river

### Location



### Location & Access

" Costa Dorada Deltebre (EBRO delta) Riomar 200 km below Barcelona. Access by air either Barcelona or REUS (TARRAGONA) Ryanair. By train (tgv) station ALDEA. By motorway exit L'ampolla or Aldea "

 GPS coordinates in degrees, minutes, seconds: Latitude 40°43'40"N - Longitude 0°50'8"E ([Dwelling](#))

#### Address

→ capadella RIUMAR  
43580 Deltebre

● **Motorway (junction) 39bis**

→ L'Ampolla, Province of Tarragona,  
Catalonia, Spain

→ Distance : 19km  
→ Time : 15'

● **Airport Reus**

→ Reus, Province of Tarragona, Catalonia,  
Spain

→ Distance : 70km  
→ Time : 1h

● **Train station L'Aldea/Amposta/Tortosa**

→ L'Aldea, Province of Tarragona,  
Catalonia, Spain  
→ Distance : 21km  
→ Time : 20'

- Peñíscola : (42km)
- Valderrobres : (50km)
- Tarragona : (70km)

### Contact

Spoken  
languages



# Holiday lettings Province of Tarragona - Catalonia "La Salvagina Chalet 57"

[Book now](#)

## Availability calendar - from : october 2019

Oct	Tu	W	Th	F	Sa	Su	M	Tu	W	Th	F	Sa	Su	M	Tu	W	Th	F	Sa	Su	M	Tu	W	Th							
2019	1	2	3	4	5	6	7	8	9	10	11	12	13	14	15	16	17	18	19	20	21	22	23	24	25	26	27	28	29	30	31
																						-	-	-	-	-	-	-	-	-	-

Nov	F	Sa	Su	M	Tu	W	Th	F	Sa	Su	M	Tu	W	Th	F	Sa	Su	M	Tu	W	Th	F	Sa							
2019	1	2	3	4	5	6	7	8	9	10	11	12	13	14	15	16	17	18	19	20	21	22	23	24	25	26	27	28	29	30
	-	-	-	-	-	-	-	-	-	-	-	-	-	-	-	-	-	-	-	-	-	-	-	-	-	-	-	-	-	-

Dec	Su	M	Tu	W	Th	F	Sa	Su	M	Tu	W	Th	F	Sa	Su	M	Tu	W	Th	F	Sa	Su	M	Tu							
2019	1	2	3	4	5	6	7	8	9	10	11	12	13	14	15	16	17	18	19	20	21	22	23	24	25	26	27	28	29	30	31
	-	-	-	-	-	-	-	-	-	-	-	-	-	-	-	-	-	-	-	-	-	-	-	-	-	-	-	-	-	-	

Jan	W	Th	F	Sa	Su	M	Tu	W	Th	F	Sa	Su	M	Tu	W	Th	F	Sa	Su	M	Tu	W	Th	F							
2020	1	2	3	4	5	6	7	8	9	10	11	12	13	14	15	16	17	18	19	20	21	22	23	24	25	26	27	28	29	30	31
	-	-	-	-	-	-	-	-	-	-	-	-	-	-	-	-	-	-	-	-	-	-	-	-	-	-	-	-	-	-	

Feb	Sa	Su	M	Tu	W	Th	F	Sa	Su	M	Tu	W	Th	F	Sa	Su	M	Tu	W	Th	F	Sa							
2020	1	2	3	4	5	6	7	8	9	10	11	12	13	14	15	16	17	18	19	20	21	22	23	24	25	26	27	28	29
	-	-	-	-	-	-	-	-	-	-	-	-	-	-	-	-	-	-	-	-	-	-	-	-	-	-	-	-	-

Mar	Su	M	Tu	W	Th	F	Sa	Su	M	Tu	W	Th	F	Sa	Su	M	Tu	W	Th	F	Sa	Su	M	Tu							
2020	1	2	3	4	5	6	7	8	9	10	11	12	13	14	15	16	17	18	19	20	21	22	23	24	25	26	27	28	29	30	31
	-	-	-	-	-	-	-	-	-	-	-	-	-	-	-	-	-	-	-	-	-	-	-	-	-	-	-	-	-	-	

Apr	W	Th	F	Sa	Su	M	Tu	W	Th	F	Sa	Su	M	Tu	W	Th	F	Sa	Su	M	Tu	W	Th							
2020	1	2	3	4	5	6	7	8	9	10	11	12	13	14	15	16	17	18	19	20	21	22	23	24	25	26	27	28	29	30
	-	-	-	-	-	-	-	-	-	-	-	-	-	-	-	-	-	-	-	-	-	-	-	-	-	-	-	-	-	-

May	F	Sa	Su	M	Tu	W	Th	F	Sa	Su	M	Tu	W	Th	F	Sa	Su	M	Tu	W	Th	F	Sa	Su							
2020	1	2	3	4	5	6	7	8	9	10	11	12	13	14	15	16	17	18	19	20	21	22	23	24	25	26	27	28	29	30	31
	-	-	-	-	-	-	-	-	-	-	-	-	-	-	-	-	-	-	-	-	-	-	-	-	-	-	-	-	-	-	

June	M	Tu	W	Th	F	Sa	Su	M	Tu	W	Th	F	Sa	Su	M	Tu	W	Th	F	Sa	Su	M	Tu							
2020	1	2	3	4	5	6	7	8	9	10	11	12	13	14	15	16	17	18	19	20	21	22	23	24	25	26	27	28	29	30
	-	-	-	-	-	-	-	-	-	-	-	-	-	-	-	-	-	-	-	-	-	-	-	-	-	-	-	-	-	-

Jul	W	Th	F	Sa	Su	M	Tu	W	Th	F	Sa	Su	M	Tu	W	Th	F	Sa	Su	M	Tu	W	Th	F							
2020	1	2	3	4	5	6	7	8	9	10	11	12	13	14	15	16	17	18	19	20	21	22	23	24	25	26	27	28	29	30	31
	-	-	-	-	-	-	-	-	-	-	-	-	-	-	-	-	-	-	-	-	-	-	-	-	-	-	-	-	-	-	





Holiday lettings  
Deltebre - Spain  
"La Salvagina Chalet 57"

9

[Book now](#)

Availability calendar - from : july 2020





Aug	Sa	Su	M	Tu	W	Th	F	Sa	Su	M	Tu	W	Th	F	Sa	Su	M	Tu	W	Th	F	Sa	Su	M							
2020	1	2	3	4	5	6	7	8	9	10	11	12	13	14	15	16	17	18	19	20	21	22	23	24	25	26	27	28	29	30	31
-	-	-	-	-	-	-	-	-	-	-	-	-	-	-	-	-	-	-	-	-	-	-	-	-	-	-	-	-	-	-	

Sep	Tu	W	Th	F	Sa	Su	M	Tu	W	Th	F	Sa	Su	M	Tu	W	Th	F	Sa	Su	M	Tu	W							
2020	1	2	3	4	5	6	7	8	9	10	11	12	13	14	15	16	17	18	19	20	21	22	23	24	25	26	27	28	29	30
-	-	-	-	-	-	-	-	-	-	-	-	-	-	-	-	-	-	-	-	-	-	-	-	-	-	-	-	-	-	-

[Month : Next >>](#)

Rental rates - House - from 1 to 6 Person(s)

Rates	Night	Weekend	week	2 weeks	Month
 Low season	-	-	Rs.16793* (Saturday)	Rs.33586* (Saturday)	Rs.63893* (Saturday)
 Mid season	-	-	Rs.31587* (Saturday)	Rs.63173* (Saturday)	-
 High season	-	-	Rs.49579* (Saturday)	Rs.99158* (Saturday)	-
 Festive specials	-	-	Rs.21591* (Saturday)	Rs.43182* (Saturday)	-

(Check-in day)

[Book now](#)

Booking conditions

• Reservation

- Payment made upon reservation : 40% of rental sum
- Payment balance : 1 month before the stay
- Deposit required : Rs.23990\*

• rentals

- Service charges to be added
- Day tax included

[▶ Book now](#)

[▶ Contact the owner](#)

Accepted methods of payment

- Bank transfer (wire)
- Cash

Contact directly the property owners

[www.iha.co.in](http://www.iha.co.in)  
Advert No.  
65967  
[>> Book now <<](#)

Contact

Spoken languages



\* Converted at the rate indicated : €100 = \$110 = £91 = Rs.7996.6

Advert No. 65967

[www.iha.co.in](http://www.iha.co.in)

