

# Holiday lettings Eben im Pongau "Appartement 3"

Apartment situated in a family-friendly organic farm, quiet Valley location, ideal starting point for summer and winter activities.



**Flat-Apartments** 1st floor in a(an) Farm setting

Setting : rural, country setting

Capacity : from 2 to 4 person(s)

Bedroom(s) : 2

Room(s) : 3

Eben im Pongau - Province of Salzburg

Austria

Reservation : +43 (0) 64588354 (Austria)

Advert No. 55216

www.iha.co.in



>> HOLIDAY LETTINGS

BOOK DIRECT WITH THE OWNERS

## Holiday lettings



Flat-Apartments 1st floor in a(an) Farm setting

- **Ideal for family**
- **View :** country side, garden/park, courtyard, farmland, meadow, forest
- **Setting :** rural, country setting
- **Exposure :** South

" The apartment is spacious 70 m<sup>2</sup> big. With eat-in kitchen, electric cooker with oven, dishwasher, kettle, bathroom with shower and WC, coffee maker, microwave oven, satellite-TV, CD-radio. Two bedrooms (2 persons), pull-out couch in the eat-in kitchen, living room and terrace. Equipped with bed linen, towels, toilet paper and detergent. "

## Assets

- **Swimming pool :**  
Private swimming-pool, circular (diameter 4,50m), step ladder
- **Parking :**  
Covered parking : 5 closed individual place (s).
- **Advantages :**  
Ski locker, ski boot warmer, sauna, billiard table, table football, darts, ping-pong table, 4 ping-pong bats, basket ball net, horses and riding equipment
- **baby equipment :**  
Baby chair, baby potty, pushchair

Benefits :  
Stable(s)

## Surroundings & location



Mountain



Ski



Horse riding

" Destination Salzburg sports world, our farm is located between flat and Filzmoos in the beautiful valley surrounded by meadows and Woods. A small stream near the farm invites you to play or cool for kids or adults. Infrared cabin for relaxing. A large trampoline, swimming pool 5 m 90 cm deep, children's bikes, swing, slide, tree house, table tennis, table football, billiard, etc are available. As well as a native American Teepee for grilling, or even to stay with Campfire. We have also still Petting animals such as goats, sheep, cats, dog, a horse, rabbits, cows, a pig and chickens. We own five children and make them like a hike or a barbecue evening around the campfire. "

### Leisure

- **Leisure activities less than 20 km / 12 miles :**

Alpine skiing, cross-country skiing, ski-trekking, luge (run), ice-skating, bathing, golf, tennis, riding school, pathway, coastal/forest paths, hiking, climbing, rock climbing, horse-drawn carriage, mini-golf, skate board (ramps), ten-pin bowling, volleyball, fishing

- **Supervised :**

Ski school, childs ski area, riding school

### Surroundings

- **Locality :**

Ski slopes 2km  
Ski lifts 2km  
Ice skating rink 10km  
Heated swimming pool 10km  
Public swimming pool 10km  
18 hole golf course 15km  
Flying clubs >50km  
River <50m  
Forest 50m

- **Amenities :**

Village centre 4km  
Bus stop / bus station 100m  
Ski bus pick up point 4km  
Ski hire shop 4km  
Breadshop 4km  
Hairdressing salon 4km  
Post office 4km  
Bank 4km  
Cash point 4km  
Chemist 15km  
Doctor 4km  
Hospital 25km  
Dispensing clinic 15km

Holiday lettings  
Province of Salzburg - Eben im Pongau  
"Appartement 3"

3

[Book now](#)

Interior

- **Receive up to :**  
from 2 to 4 person(s) (2 adults, 2 children)
- **Liveable floor area :**  
65m<sup>2</sup>
- **Interior layout :**  
3 Room(s), 2 bedroom(s), 1 bathroom, 1 WC, large separate kitchen
- **Sleeps - bed(s) :**  
2 double bed(s), 2 sofa bed(s) 1 pers, 1 baby cot(s)
- **Guest facilities :**  
T.V., DVD player, board games, cable/satelite, high speed internet access, wifi, wardrobe, Hanging wardrobe, radio alarmclock, hair dryer, heated towel rail, central heating, Curtains, Double glazed, digipad entry system
- **Appliances :**  
Crockery/cuttlery, kitchen utensils, cafetiere, electric coffee maker, electric kettle, toaster, electric cooker, electric hobs, micro-wave oven, extractor hood, refridgerator, freezer, dish washer, washing machine, clothes dryer

Exterior

- **Outside accommodation :**  
Balcony
- **Outside setting :**  
Private courtyard > 1000m<sup>2</sup>, lawn 1000m<sup>2</sup>, stream
- **Outside amenities :**  
BBQ, garden table(s), 6 garden seat(s), parasol, 8 sun recliner(s), child's swing, sand pit

Services

- **Washing :**  
Sheets, Towels, Linen, Blanket(s), Pillows
- **House :**  
Cleaning on departure supplement (+Rs.2479\*), Snow clearance
- **Restauration :**  
Breakfast supplement (+Rs.640\*)

For your guidance

- **For your guidance**  
Children welcome  
Pets accepted  
Present on site : pets, equine animals, farm animals  
Non smoking rental, personal transport advisable  
Water : cold high pressure  
Local voltage supply : 220-240V / 50Hz  
Electricity supply : mains
- **Handicapped people welcome**  
Fitted out for the disabled : hard of hearing, mentally

Advert No. 55216

[www.iha.co.in](http://www.iha.co.in)



>> HOLIDAY LETTINGS

BOOK DIRECT WITH THE OWNERS

Holiday lettings  
Province of Salzburg - Austria  
"Appartement 3"

4  
[Book now](#)

Route map



Location & Access

" Car: Tauernautobahn A10 - exit Eben im Pongau. At the junction 4 km towards Filzmoos L219. After the carpentry farm on the left side.  
Train: Station level, plane: Salzburg Airport W.a. Mozart (70 km) Munich (220 km). "



GPS coordinates in degrees, minutes, seconds: Latitude 47° 25'45"N - Longitude 13°26'5"E ([Dwelling](#))

Address

→ Schattbach 26  
5531 Eben im Pongau

• Motorway (junction) A 10

→ Eben im Pongau, Province of Salzburg,  
Austria

→ Distance : 4km

→ Time : 5'

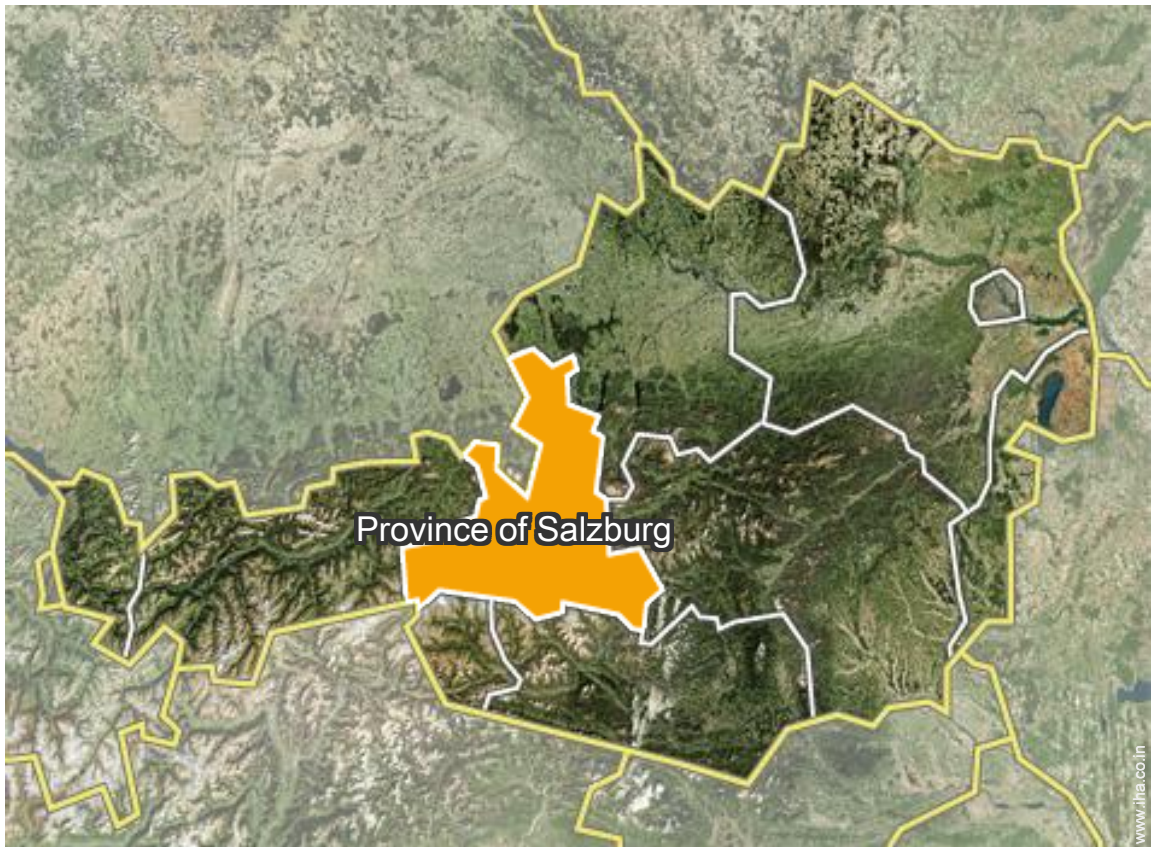
• Sankt Johann im Pongau : (20km)

Contact

Spoken  
languages



Location



# Holiday lettings Eben im Pongau - Austria "Appartement 3"

[Book now](#)

## Availability calendar - from : april 2019

| Apr  | M | Tu | W | Th | F | Sa | Su | M | Tu | W  | Th | F  | Sa | Su | M  | Tu | W  | Th | F  | Sa | Su | M  | Tu |    |    |    |    |    |    |    |
|------|---|----|---|----|---|----|----|---|----|----|----|----|----|----|----|----|----|----|----|----|----|----|----|----|----|----|----|----|----|----|
| 2019 | 1 | 2  | 3 | 4  | 5 | 6  | 7  | 8 | 9  | 10 | 11 | 12 | 13 | 14 | 15 | 16 | 17 | 18 | 19 | 20 | 21 | 22 | 23 | 24 | 25 | 26 | 27 | 28 | 29 | 30 |
|      |   |    |   |    |   |    |    |   |    |    |    |    |    |    |    |    |    |    |    |    |    |    |    |    |    |    |    |    |    |    |

| May  | W | Th | F | Sa | Su | M | Tu | W | Th | F  | Sa | Su | M  | Tu | W  | Th | F  | Sa | Su | M  | Tu | W  | Th | F  | Sa | Su | M  | Tu | W  | Th | F  |
|------|---|----|---|----|----|---|----|---|----|----|----|----|----|----|----|----|----|----|----|----|----|----|----|----|----|----|----|----|----|----|----|
| 2019 | 1 | 2  | 3 | 4  | 5  | 6 | 7  | 8 | 9  | 10 | 11 | 12 | 13 | 14 | 15 | 16 | 17 | 18 | 19 | 20 | 21 | 22 | 23 | 24 | 25 | 26 | 27 | 28 | 29 | 30 | 31 |
|      | - | -  | - | -  | -  | - | -  | - | -  | -  | -  | -  | -  | -  | -  | -  | -  | -  | -  | -  | -  | -  | -  | -  | -  | -  | -  | -  | -  | -  | -  |

| June | Sa | Su | M | Tu | W | Th | F | Sa | Su | M  | Tu | W  | Th | F  | Sa | Su | M  | Tu | W  | Th | F  | Sa | Su |    |    |    |    |    |    |    |
|------|----|----|---|----|---|----|---|----|----|----|----|----|----|----|----|----|----|----|----|----|----|----|----|----|----|----|----|----|----|----|
| 2019 | 1  | 2  | 3 | 4  | 5 | 6  | 7 | 8  | 9  | 10 | 11 | 12 | 13 | 14 | 15 | 16 | 17 | 18 | 19 | 20 | 21 | 22 | 23 | 24 | 25 | 26 | 27 | 28 | 29 | 30 |
|      | -  | -  | - | -  | - | -  | - | -  | -  | -  | -  | -  | -  | -  | -  | -  | -  | -  | -  | -  | -  | -  | -  | -  | -  | -  | -  | -  | -  | -  |

| Jul  | M | Tu | W | Th | F | Sa | Su | M | Tu | W  | Th | F  | Sa | Su | M  | Tu | W  | Th | F  | Sa | Su | M  | Tu | W  | Th | F  | Sa | Su | M  | Tu | W  |
|------|---|----|---|----|---|----|----|---|----|----|----|----|----|----|----|----|----|----|----|----|----|----|----|----|----|----|----|----|----|----|----|
| 2019 | 1 | 2  | 3 | 4  | 5 | 6  | 7  | 8 | 9  | 10 | 11 | 12 | 13 | 14 | 15 | 16 | 17 | 18 | 19 | 20 | 21 | 22 | 23 | 24 | 25 | 26 | 27 | 28 | 29 | 30 | 31 |
|      | - | -  | - | -  | - | -  | -  | - | -  | -  | -  | -  | -  | -  | -  | -  | -  | -  | -  | -  | -  | -  | -  | -  | -  | -  | -  | -  | -  | -  | -  |

| Aug  | Th | F | Sa | Su | M | Tu | W | Th | F | Sa | Su | M  | Tu | W  | Th | F  | Sa | Su | M  | Tu | W  | Th | F  | Sa | Su | M  | Tu | W  | Th | F  | Sa |
|------|----|---|----|----|---|----|---|----|---|----|----|----|----|----|----|----|----|----|----|----|----|----|----|----|----|----|----|----|----|----|----|
| 2019 | 1  | 2 | 3  | 4  | 5 | 6  | 7 | 8  | 9 | 10 | 11 | 12 | 13 | 14 | 15 | 16 | 17 | 18 | 19 | 20 | 21 | 22 | 23 | 24 | 25 | 26 | 27 | 28 | 29 | 30 | 31 |
|      | -  | - | -  | -  | - | -  | - | -  | - | -  | -  | -  | -  | -  | -  | -  | -  | -  | -  | -  | -  | -  | -  | -  | -  | -  | -  | -  | -  | -  | -  |

| Sep  | Su | M | Tu | W | Th | F | Sa | Su | M | Tu | W  | Th | F  | Sa | Su | M  | Tu | W  | Th | F  | Sa | Su | M  |    |    |    |    |    |    |    |
|------|----|---|----|---|----|---|----|----|---|----|----|----|----|----|----|----|----|----|----|----|----|----|----|----|----|----|----|----|----|----|
| 2019 | 1  | 2 | 3  | 4 | 5  | 6 | 7  | 8  | 9 | 10 | 11 | 12 | 13 | 14 | 15 | 16 | 17 | 18 | 19 | 20 | 21 | 22 | 23 | 24 | 25 | 26 | 27 | 28 | 29 | 30 |
|      | -  | - | -  | - | -  | - | -  | -  | - | -  | -  | -  | -  | -  | -  | -  | -  | -  | -  | -  | -  | -  | -  | -  | -  | -  | -  | -  | -  | -  |

| Oct  | Tu | W | Th | F | Sa | Su | M | Tu | W | Th | F  | Sa | Su | M  | Tu | W  | Th | F  | Sa | Su | M  | Tu | W  | Th | F  | Sa | Su | M  | Tu | W  | Th |
|------|----|---|----|---|----|----|---|----|---|----|----|----|----|----|----|----|----|----|----|----|----|----|----|----|----|----|----|----|----|----|----|
| 2019 | 1  | 2 | 3  | 4 | 5  | 6  | 7 | 8  | 9 | 10 | 11 | 12 | 13 | 14 | 15 | 16 | 17 | 18 | 19 | 20 | 21 | 22 | 23 | 24 | 25 | 26 | 27 | 28 | 29 | 30 | 31 |
|      | -  | - | -  | - | -  | -  | - | -  | - | -  | -  | -  | -  | -  | -  | -  | -  | -  | -  | -  | -  | -  | -  | -  | -  | -  | -  | -  | -  | -  | -  |

| Nov  | F | Sa | Su | M | Tu | W | Th | F | Sa | Su | M  | Tu | W  | Th | F  | Sa | Su | M  | Tu | W  | Th | F  | Sa |    |    |    |    |    |    |    |
|------|---|----|----|---|----|---|----|---|----|----|----|----|----|----|----|----|----|----|----|----|----|----|----|----|----|----|----|----|----|----|
| 2019 | 1 | 2  | 3  | 4 | 5  | 6 | 7  | 8 | 9  | 10 | 11 | 12 | 13 | 14 | 15 | 16 | 17 | 18 | 19 | 20 | 21 | 22 | 23 | 24 | 25 | 26 | 27 | 28 | 29 | 30 |
|      | - | -  | -  | - | -  | - | -  | - | -  | -  | -  | -  | -  | -  | -  | -  | -  | -  | -  | -  | -  | -  | -  | -  | -  | -  | -  | -  | -  | -  |

| Dec  | Su | M | Tu | W | Th | F | Sa | Su | M | Tu | W  | Th | F  | Sa | Su | M  | Tu | W  | Th | F  | Sa | Su | M  | Tu |    |    |    |    |    |    |    |
|------|----|---|----|---|----|---|----|----|---|----|----|----|----|----|----|----|----|----|----|----|----|----|----|----|----|----|----|----|----|----|----|
| 2019 | 1  | 2 | 3  | 4 | 5  | 6 | 7  | 8  | 9 | 10 | 11 | 12 | 13 | 14 | 15 | 16 | 17 | 18 | 19 | 20 | 21 | 22 | 23 | 24 | 25 | 26 | 27 | 28 | 29 | 30 | 31 |
|      | -  | - | -  | - | -  | - | -  | -  | - | -  | -  | -  | -  | -  | -  | -  | -  | -  | -  | -  | -  | -  | -  | -  | -  | -  | -  | -  | -  | -  |    |

| Jan  | W | Th | F | Sa | Su | M | Tu | W | Th | F  | Sa | Su | M  | Tu | W  | Th | F  | Sa | Su | M  | Tu | W  | Th | F  |    |    |    |    |    |    |    |
|------|---|----|---|----|----|---|----|---|----|----|----|----|----|----|----|----|----|----|----|----|----|----|----|----|----|----|----|----|----|----|----|
| 2020 | 1 | 2  | 3 | 4  | 5  | 6 | 7  | 8 | 9  | 10 | 11 | 12 | 13 | 14 | 15 | 16 | 17 | 18 | 19 | 20 | 21 | 22 | 23 | 24 | 25 | 26 | 27 | 28 | 29 | 30 | 31 |
|      | - | -  | - | -  | -  | - | -  | - | -  | -  | -  | -  | -  | -  | -  | -  | -  | -  | -  | -  | -  | -  | -  | -  | -  | -  | -  | -  | -  | -  |    |



Holiday lettings  
Province of Salzburg - Eben im Pongau  
**"Appartement 3"**

7  
[Book now](#)

Availability calendar - from : january 2020


| Feb  | Sa | Su | M | Tu | W | Th | F | Sa | Su | M  | Tu | W  | Th | F  | Sa | Su | M  | Tu | W  | Th | F  | Sa | Su | M  | Tu | W  | Th | F  | Sa |
|------|----|----|---|----|---|----|---|----|----|----|----|----|----|----|----|----|----|----|----|----|----|----|----|----|----|----|----|----|----|
| 2020 | 1  | 2  | 3 | 4  | 5 | 6  | 7 | 8  | 9  | 10 | 11 | 12 | 13 | 14 | 15 | 16 | 17 | 18 | 19 | 20 | 21 | 22 | 23 | 24 | 25 | 26 | 27 | 28 | 29 |
| -    | -  | -  | - | -  | - | -  | - | -  | -  | -  | -  | -  | -  | -  | -  | -  | -  | -  | -  | -  | -  | -  | -  | -  | -  | -  | -  | -  | -  |

| Mar  | Su | M | Tu | W | Th | F | Sa | Su | M | Tu | W  | Th | F  | Sa | Su | M  | Tu | W  | Th | F  | Sa | Su | M  | Tu | W  | Th | F  | Sa | Su | M  | Tu |
|------|----|---|----|---|----|---|----|----|---|----|----|----|----|----|----|----|----|----|----|----|----|----|----|----|----|----|----|----|----|----|----|
| 2020 | 1  | 2 | 3  | 4 | 5  | 6 | 7  | 8  | 9 | 10 | 11 | 12 | 13 | 14 | 15 | 16 | 17 | 18 | 19 | 20 | 21 | 22 | 23 | 24 | 25 | 26 | 27 | 28 | 29 | 30 | 31 |
| -    | -  | - | -  | - | -  | - | -  | -  | - | -  | -  | -  | -  | -  | -  | -  | -  | -  | -  | -  | -  | -  | -  | -  | -  | -  | -  | -  | -  | -  | -  |

[Month : Next >>](#)

Rental rates - Flat-Apartments - from 2 to 4 Person(s)

| Rates   | Night           | Weekend | week     | 2 weeks  | Month    |
|---|-----------------|---------|----------|----------|----------|
|  High season | Rs.9196*<br>> 4 | -       | Rs.9036* | Rs.8796* | Rs.7597* |
| > Minimum Night   |                 |         |          |          |          |

[Book now](#)

Booking conditions

• Reservation

→ Payment made upon reservation :  
20% of rental sum  
→ Payment balance :  
on handing over the keys

• rentals

→ Day tax in addition  
→ Cleaning charge levy on departure :  
Rs.2479\*

[▶ Book now](#)

[▶ Contact the owner](#)

Accepted methods of payment

• Bank transfer (wire) • Cash

Contact directly the property owners

[www.iha.co.in](http://www.iha.co.in)  
Advert No.  
55216  
[>> Book now <<](#)

Contact

Spoken languages



\* Converted at the rate indicated : €100 = \$116.85 = £89 = Rs.7996.6

Advert No. 55216

[www.iha.co.in](http://www.iha.co.in)

