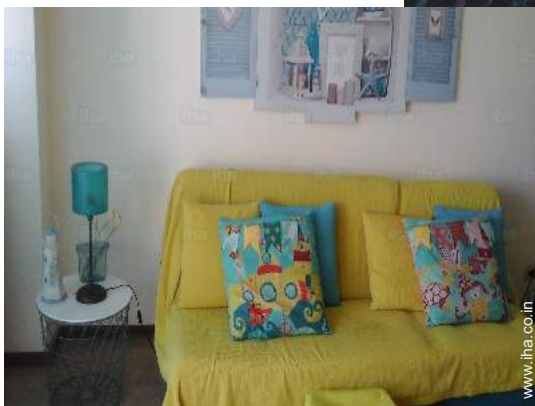


# Holiday lettings Quarteira "Edf. Cambra-Mar"



**Flat-Apartments** 7th floor, separate entrance, in a(an) Apartment block 9 floors

Setting : seaside, serene

Capacity : from 4 to 5 person(s)

Bedroom(s) : 1

Room(s) : 4

Quarteira - Algarve

Portugal

Advert No. 20621

[www.iha.co.in](http://www.iha.co.in)



>> HOLIDAY LETTINGS

BOOK DIRECT WITH THE OWNERS

## Holiday lettings



Flat-Apartments 7th floor, separate entrance, in a(an) Apartment block 9 floors

- **Ideal for all age groups, family**
- **View** : panoramic, sea/ocean, street/avenue
- **Setting** : seaside, serene
- **Exposure** : South

## Assets

- **Swimming pool** :  
Shared swimming pool, rectangular

## Surroundings & location



Seaside



Golf



Horse riding

### Leisure

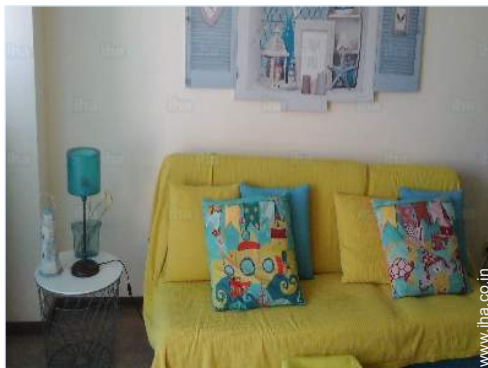
- **Leisure activities less than 20 km / 12 miles** :

Bathing, golf, tennis, riding school, pathway, hiking, ten-pin bowling

### Surroundings

- **Locality** :

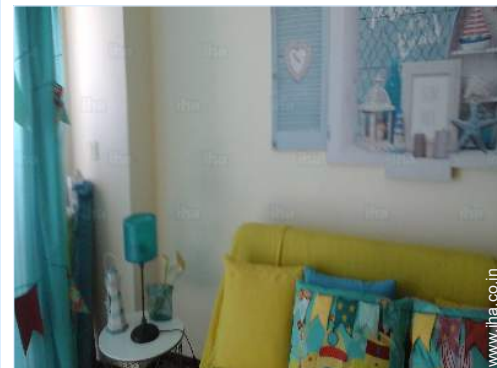
Sea/ocean <50m  
Sandy beach <50m



living room



master bedroom



sofa bed(s) 2 pers



the decor

### Interior

- **Receive up to :**  
from 4 to 5 person(s)
- **Liveable floor area :**  
65m<sup>2</sup>
- **Interior layout :**  
4 Room(s), 1 bedroom(s), 1 bathroom, living room, separate kitchen, veranda
- **Sleeps - bed(s) :**  
1 double bed(s), 1 sofa bed(s) 2 pers, 1 sofa bed(s) 1 pers
- **Guest facilities :**  
Lift, T.V., t.v points, cable/satelite, wardrobe
- **Appliances :**  
Crockery/cuttlery, kitchen utensils, cafetiere, toaster, juicer, gas cooker, oven, micro-wave oven, extractor hood, refridgerator, dish washer, washing machine, iron, ironing board



sofa bed(s) 2 pers

### Exterior

- **Outside accommodation :**  
Terrace
- **Outside setting :**  
Private courtyard 30m<sup>2</sup>



bathroom

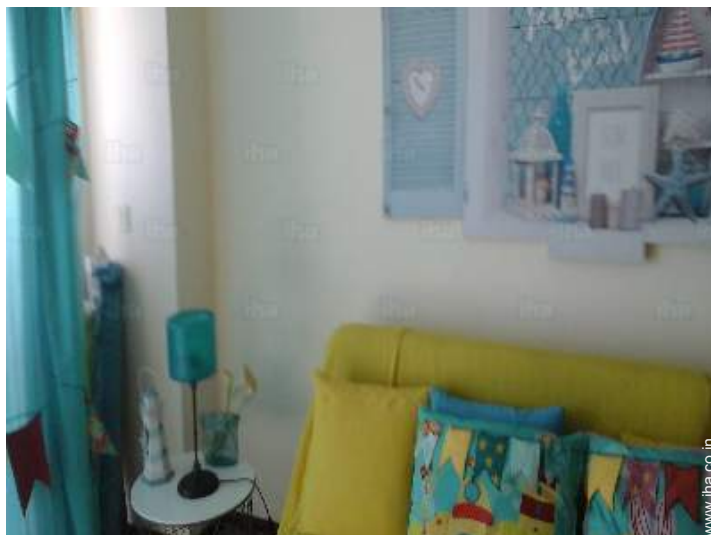
### Services

- **Washing :**  
Blanket(s), Quilt(s), Pillows
- **House :**  
Cleaning on departure

Photo album - 1



living room

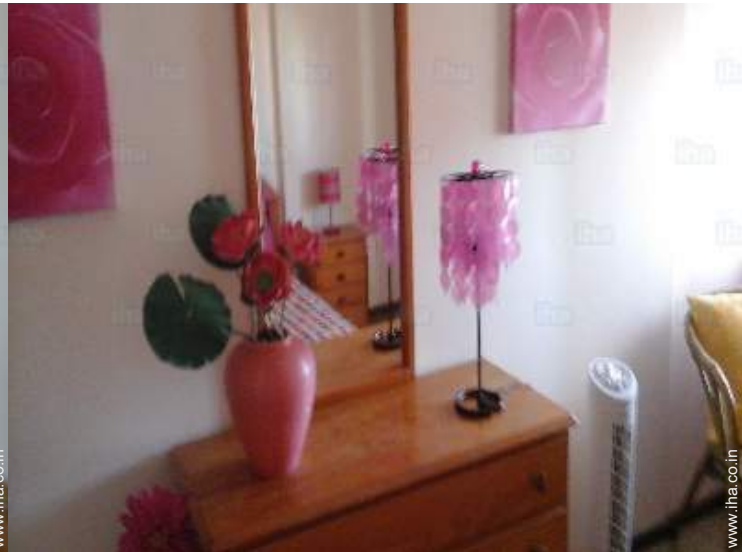


sofa bed(s) 2 pers

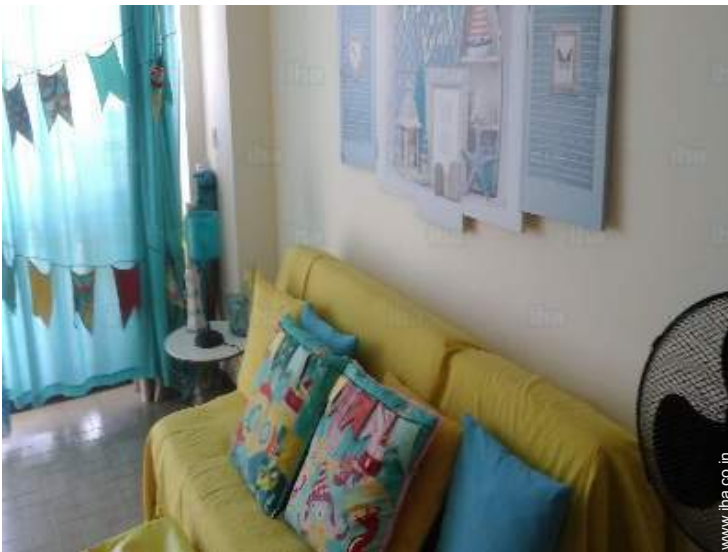
Photo album - 2



master bedroom



the decor



sofa bed(s) 2 pers



bathroom

[Favourite photo gallery - 1](#)



Oct 2018



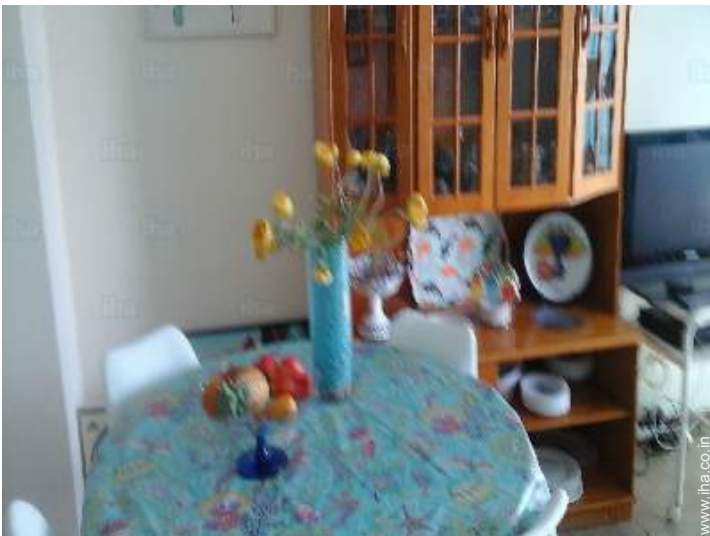
Oct 2018



Oct 2018



Oct 2018



Oct 2018



Oct 2018

[Favourite photo gallery - 2](#)



Oct 2018



Oct 2018



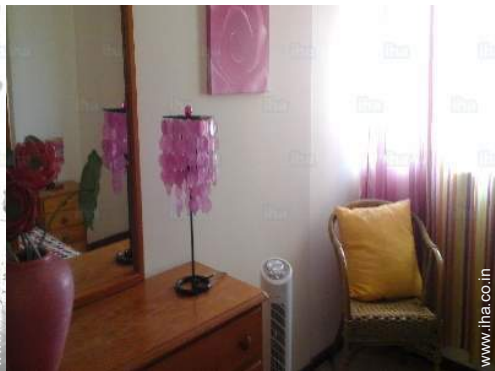
Oct 2018



Oct 2018



Oct 2018



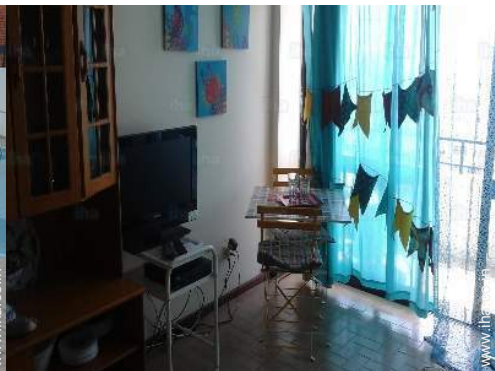
Oct 2018



Oct 2018



Oct 2018



Oct 2018



Oct 2018



Oct 2018



Oct 2018

### Location



### Location & Access



GPS coordinates in degrees, minutes, seconds: Latitude 37°4'18"N - Longitude 8° 6'7"W ([Dwelling](#))

#### Address

→ av. Francisco Sa Carneiro  
edf.Cambra-Mar, torre A, 7° BIQuarteira  
8125 Quarteira

#### • Train station Loulé Praia de Quarteira

→ Loulé, Algarve, Portugal  
→ Distance : 11km  
→ Time : 15'

- Loulé : (11km)
- Albufeira : (13km)
- Almancil : (5km)

### Contact

Spoken languages





# Holiday lettings Quarteira - Portugal "Edf. Cambra-Mar"

[Book now](#)

## Availability calendar - from : may 2019

May	W	Th	F	Sa	Su	M	Tu	W	Th	F	Sa	Su	M	Tu	W	Th	F	Sa	Su	M	Tu	W	Th	F	Sa	Su	M	Tu	W	Th	F
2019	1	2	3	4	5	6	7	8	9	10	11	12	13	14	15	16	17	18	19	20	21	22	23	24	25	26	27	28	29	30	31
																				-	-	-	-	-	-	-	-	-	-	-	-

June	Sa	Su	M	Tu	W	Th	F	Sa	Su	M	Tu	W	Th	F	Sa	Su	M	Tu	W	Th	F	Sa	Su							
2019	1	2	3	4	5	6	7	8	9	10	11	12	13	14	15	16	17	18	19	20	21	22	23	24	25	26	27	28	29	30
	-	-	-	-	-	-	-	-	-	-	-	-	-	-	-	-	-	-	-	-	-	-	-	-	-	-	-	-	-	-

Jul	M	Tu	W	Th	F	Sa	Su	M	Tu	W	Th	F	Sa	Su	M	Tu	W	Th	F	Sa	Su	M	Tu	W	Th	F	Sa	Su	M	Tu	W
2019	1	2	3	4	5	6	7	8	9	10	11	12	13	14	15	16	17	18	19	20	21	22	23	24	25	26	27	28	29	30	31
	-	-	-	-	-	-	-	-	-	-	-	-	-	-	-	-	-	-	-	-	-	-	-	-	-	-	-	-	-	-	-

Aug	Th	F	Sa	Su	M	Tu	W	Th	F	Sa	Su	M	Tu	W	Th	F	Sa	Su	M	Tu	W	Th	F	Sa	Su	M	Tu	W	Th	F	Sa
2019	1	2	3	4	5	6	7	8	9	10	11	12	13	14	15	16	17	18	19	20	21	22	23	24	25	26	27	28	29	30	31
	-	-	-	-	-	-	-	-	-	-	-	-	-	-	-	-	-	-	-	-	-	-	-	-	-	-	-	-	-	-	-

Sep	Su	M	Tu	W	Th	F	Sa	Su	M	Tu	W	Th	F	Sa	Su	M	Tu	W	Th	F	Sa	Su	M							
2019	1	2	3	4	5	6	7	8	9	10	11	12	13	14	15	16	17	18	19	20	21	22	23	24	25	26	27	28	29	30
	-	-	-	-	-	-	-	-	-	-	-	-	-	-	-	-	-	-	-	-	-	-	-	-	-	-	-	-	-	-

Oct	Tu	W	Th	F	Sa	Su	M	Tu	W	Th	F	Sa	Su	M	Tu	W	Th	F	Sa	Su	M	Tu	W	Th	F	Sa	Su	M	Tu	W	Th
2019	1	2	3	4	5	6	7	8	9	10	11	12	13	14	15	16	17	18	19	20	21	22	23	24	25	26	27	28	29	30	31
	-	-	-	-	-	-	-	-	-	-	-	-	-	-	-	-	-	-	-	-	-	-	-	-	-	-	-	-	-	-	-

Nov	F	Sa	Su	M	Tu	W	Th	F	Sa	Su	M	Tu	W	Th	F	Sa	Su	M	Tu	W	Th	F	Sa							
2019	1	2	3	4	5	6	7	8	9	10	11	12	13	14	15	16	17	18	19	20	21	22	23	24	25	26	27	28	29	30
	-	-	-	-	-	-	-	-	-	-	-	-	-	-	-	-	-	-	-	-	-	-	-	-	-	-	-	-	-	-

Dec	Su	M	Tu	W	Th	F	Sa	Su	M	Tu	W	Th	F	Sa	Su	M	Tu	W	Th	F	Sa	Su	M	Tu							
2019	1	2	3	4	5	6	7	8	9	10	11	12	13	14	15	16	17	18	19	20	21	22	23	24	25	26	27	28	29	30	31
	-	-	-	-	-	-	-	-	-	-	-	-	-	-	-	-	-	-	-	-	-	-	-	-	-	-	-	-	-	-	

Jan	W	Th	F	Sa	Su	M	Tu	W	Th	F	Sa	Su	M	Tu	W	Th	F	Sa	Su	M	Tu	W	Th	F	Sa	Su	M	Tu	W	Th	F
2020	1	2	3	4	5	6	7	8	9	10	11	12	13	14	15	16	17	18	19	20	21	22	23	24	25	26	27	28	29	30	31
	-	-	-	-	-	-	-	-	-	-	-	-	-	-	-	-	-	-	-	-	-	-	-	-	-	-	-	-	-	-	-

Feb	Sa	Su	M	Tu	W	Th	F	Sa	Su	M	Tu	W	Th	F	Sa	Su	M	Tu	W	Th	F	Sa							
2020	1	2	3	4	5	6	7	8	9	10	11	12	13	14	15	16	17	18	19	20	21	22	23	24	25	26	27	28	29
	-	-	-	-	-	-	-	-	-	-	-	-	-	-	-	-	-	-	-	-	-	-	-	-	-	-	-	-	-

 Reserved



# Holiday lettings Quarteira - Portugal "Edf. Cambra-Mar"

10  
[Book now](#)

## Availability calendar - from : february 2020

Mar	Su	M	Tu	W	Th	F	Sa	Su	M	Tu	W	Th	F	Sa	Su	M	Tu	W	Th	F	Sa	Su	M	Tu							
2020	1	2	3	4	5	6	7	8	9	10	11	12	13	14	15	16	17	18	19	20	21	22	23	24	25	26	27	28	29	30	31
-	-	-	-	-	-	-	-	-	-	-	-	-	-	-	-	-	-	-	-	-	-	-	-	-	-	-	-	-	-	-	

Apr	W	Th	F	Sa	Su	M	Tu	W	Th	F	Sa	Su	M	Tu	W	Th	F	Sa	Su	M	Tu	W	Th							
2020	1	2	3	4	5	6	7	8	9	10	11	12	13	14	15	16	17	18	19	20	21	22	23	24	25	26	27	28	29	30
-	-	-	-	-	-	-	-	-	-	-	-	-	-	-	-	-	-	-	-	-	-	-	-	-	-	-	-	-	-	

Reserved

[Month : Next >>](#)

## Rental rates - Flat-Apartments - from 4 to 5 Person(s)

Rates	Night	Weekend	week	2 weeks	Month
<input type="checkbox"/> Low season	Rs.2799*	-	Rs.15194*	Rs.23990*	-
<input type="checkbox"/> Mid season	Rs.3199*	-	Rs.31986*	Rs.55976*	-
<input type="checkbox"/> High season	Rs.5598* > 7	-	Rs.39983*	Rs.75968*	-

> Minimum Night

[Book now](#)

### Booking conditions

#### • Reservation

→ Payment made upon reservation :  
30% of rental sum  
→ Payment balance :  
on handing over the keys

### Accepted methods of payment

• Bank transfer (wire) • Cash

[▶ Book now](#)

[▶ Contact the owner](#)

Contact directly the property owners

[www.iha.co.in](http://www.iha.co.in)  
Advert No.  
20621  
[>> Book now <<](#)

### Contact

Spoken languages



\* Converted at the rate indicated : €100 = \$116.85 = £89 = Rs.7996.6

Advert No. 20621

[www.iha.co.in](http://www.iha.co.in)



[>> HOLIDAY LETTINGS](#)

[BOOK DIRECT WITH THE OWNERS](#)