

# Holiday lettings Pinares "Familia Bauzá"



**Flat-Apartments** 1st floor, separate entrance, in a(an) Traditional accommodation

Setting : pleasant, tranquil

Capacity : from 1 to 4 person(s)

Bedroom(s) : 2

Room(s) : 4



Gîtes de France (4 ears)

S'Illot - Cala Morlanda - Majorca - Balearic Islands  
Spain



Advert No. 52282

[www.iha.co.in](http://www.iha.co.in)



>> HOLIDAY LETTINGS

BOOK DIRECT WITH THE OWNERS

### Holiday lettings



Flat-Apartments 1st floor, separate entrance, in a(an) Traditional accommodation

- **Ideal for family, all age groups**
- **View :** panoramic, unobscured, sea/ ocean, mountain, village, street/avenue
- **Setting :** pleasant, tranquil
- **Exposure :** East

### Surroundings & location



#### Leisure

- **Leisure activities less than 20 km / 12 miles :**

Bathing, pedalo, snorkelling, scuba diving, scuba diving (Standard diving dress), water skiing, surfing, golf, tennis, pathway, coastal/ forest paths, hiking, kite flying, parascending, boat trips, horse-drawn carriage, horse trekking, donkey rides, mini-golf, hunting, safari, fishing, angling, spear fishing, pétanque pitch

- **Attractions and relaxation :**

Bar/pub, discotheque, restaurant, cinema, zoo/animal park, sea world, nature reserve, exhibition centre, art gallery, historical site, theatre, antiques & bric-a-brac, local craftshop, cellar and wine tasting, racecourse, natural spring baths, thermal baths, sauna, health farm, beauticians, fitness centre

#### Surroundings

- **Locality :**

Sea/ocean 50m  
Sandy beach 200m  
Shingle beach 300m  
Nudist beach 500m  
Creek 300m  
Public tennis court 200m  
Watersports centre 300m  
Cliff 50m  
Forest 2km

- **Amenities :**

Nursery 500m  
Village centre <50m  
Bus stop / bus station 100m  
Bike/mountain bike hire 800m  
Scooter/motorbike hire  
Car rental  
Local shops 200m  
Supermarket 200m  
High class retailers 200m  
Hairdressing salon 100m  
Internet cafe 500m  
Chemist 300m  
Doctor 500m  
Nurse 500m  
Hospital 15km  
Dispensing clinic 500m



view from the terrace



view from the balcony



view from the flat



façade

### Interior

- **Receive up to :**  
from 1 to 4 person(s)
- **Liveable floor area :**  
70m<sup>2</sup>
- **Interior layout :**  
4 Room(s), 2 bedroom(s), 1 bathroom, separate kitchen, dining room, laundry room
- **Sleeps - bed(s) :**  
1 double bed(s), 2 single bed(s)
- **Guest facilities :**  
T.V., videoplayer, DVD player, t.v points, cable/satelite, wifi, wardrobe, cupboard, Hanging wardrobe, hair dryer, mobile cool air fan, electric heating, Glazed in area, Curtains, Blinds, entry phone system
- **Appliances :**  
Crockery/cuttlery, kitchen utensils, cafetiere, electric kettle, toaster, juicer, electric cooker, electric hobs, oven, micro-wave oven, extractor hood, refridgerator, freezer, washing machine, iron, ironing board

### Exterior

- **Outside accommodation :**  
Terrace 16m<sup>2</sup>, roof terrace 70m<sup>2</sup>, balcony 4m<sup>2</sup>, sundeck 30m<sup>2</sup>



furniture

### Services

- **Washing :**  
Sheets (6 X / per week), Towels (4 X / per week), Linen (6 X / per week), Blanket(s) (3 X / per week), Quilt(s) (3 X / per week), Pillows (4 X / per week)
- **House :**  
Cleaning on departure, Airport transfers supplement (+Rs.4798\*)

### For your guidance

- **For your guidance**  
Children welcome  
Mobile telephone network coverage  
Water not drinkable  
Local voltage supply : 220-240V / 50Hz  
Electricity supply : mains



dining room

Photo album - 1



view from the terrace



view from the flat



view from the balcony



façade



dining room

Photo album - 2



furniture



view from the flat



view from the house



T.V.



kitchen



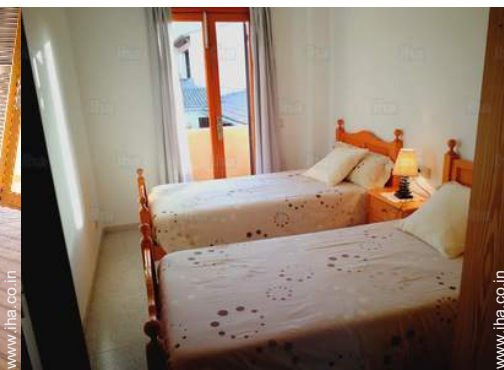
kitchen



double bed(s)



bedroom



bedroom



bathroom

Photo album - 3



bathroom



sandy beach



sandy beach



Seaside



Summer



sea view



view over the sea



sleeping nook



village centre



Present on site



view from the flat

### Location



### Location & Access



GPS coordinates in degrees, minutes, seconds: Latitude 39°33'41"N - Longitude 3° 22'26"E (Dwelling)

#### Address

→ Carrer de la Rosa, 3-1°  
07687 S'Illot - Cala Morlanda

#### • Airport Palma de Mallorca

→ Palma de Mallorca, Majorca, Balearic Islands, Spain  
→ Distance : 65km  
→ Time : 1h

#### • Sea port Palma de Mallorca

→ Palma de Mallorca, Majorca, Balearic Islands, Spain  
→ Distance : 65km  
→ Time : 1h

- Manacor : (14km)
- Cala Bona : (5km)
- Son Servera : (7,5km)

### Contact

Spoken languages



# Holiday lettings Pinares - Spain "Familia Bauzá"

8  
[Book now](#)

## Availability calendar - from : february 2019

Feb	F	Sa	Su	M	Tu	W	Th	F	Sa	Su	M	Tu	W	Th	F	Sa	Su	M	Tu	W	Th							
2019	1	2	3	4	5	6	7	8	9	10	11	12	13	14	15	16	17	18	19	20	21	22	23	24	25	26	27	28

Mar	F	Sa	Su	M	Tu	W	Th	F	Sa	Su	M	Tu	W	Th	F	Sa	Su	M	Tu	W	Th	F	Sa	Su							
2019	1	2	3	4	5	6	7	8	9	10	11	12	13	14	15	16	17	18	19	20	21	22	23	24	25	26	27	28	29	30	31
	-	-	-	-	-	-	-	-	-	-	-	-	-	-	-	-	-	-	-	-	-	-	-	-	-	-	-	-	-	-	

Apr	M	Tu	W	Th	F	Sa	Su	M	Tu	W	Th	F	Sa	Su	M	Tu	W	Th	F	Sa	Su	M	Tu							
2019	1	2	3	4	5	6	7	8	9	10	11	12	13	14	15	16	17	18	19	20	21	22	23	24	25	26	27	28	29	30
	-	-	-	-	-	-	-	-	-	-	-	-	-	-	-	-	-	-	-	-	-	-	-	-	-	-	-	-	-	-

May	W	Th	F	Sa	Su	M	Tu	W	Th	F	Sa	Su	M	Tu	W	Th	F	Sa	Su	M	Tu	W	Th	F	Sa	Su	M	Tu	W	Th	F	
2019	1	2	3	4	5	6	7	8	9	10	11	12	13	14	15	16	17	18	19	20	21	22	23	24	25	26	27	28	29	30	31	
	-	-	-	-	-	-	-	-	-	-	-	-	-	-	-	-	-	-	-	-	-	-	-	-	-	-	-	-	-	-	-	-

June	Sa	Su	M	Tu	W	Th	F	Sa	Su	M	Tu	W	Th	F	Sa	Su	M	Tu	W	Th	F	Sa	Su								
2019	1	2	3	4	5	6	7	8	9	10	11	12	13	14	15	16	17	18	19	20	21	22	23	24	25	26	27	28	29	30	
	-	-	-	-	-	-	-	-	-	-	-	-	-	-	-	-	-	-	-	-	-	-	-	-	-	-	-	-	-	-	-

Jul	M	Tu	W	Th	F	Sa	Su	M	Tu	W	Th	F	Sa	Su	M	Tu	W	Th	F	Sa	Su	M	Tu	W	Th	F	Sa	Su	M	Tu	W
2019	1	2	3	4	5	6	7	8	9	10	11	12	13	14	15	16	17	18	19	20	21	22	23	24	25	26	27	28	29	30	31
	-	-	-	-	-	-	-	-	-	-	-	-	-	-	-	-	-	-	-	-	-	-	-	-	-	-	-	-	-	-	-

Aug	Th	F	Sa	Su	M	Tu	W	Th	F	Sa	Su	M	Tu	W	Th	F	Sa	Su	M	Tu	W	Th	F	Sa	Su						
2019	1	2	3	4	5	6	7	8	9	10	11	12	13	14	15	16	17	18	19	20	21	22	23	24	25	26	27	28	29	30	31
	-	-	-	-	-	-	-	-	-	-	-	-	-	-	-	-	-	-	-	-	-	-	-	-	-	-	-	-	-	-	-

Sep	Su	M	Tu	W	Th	F	Sa	Su	M	Tu	W	Th	F	Sa	Su	M	Tu	W	Th	F	Sa	Su	M							
2019	1	2	3	4	5	6	7	8	9	10	11	12	13	14	15	16	17	18	19	20	21	22	23	24	25	26	27	28	29	30
	-	-	-	-	-	-	-	-	-	-	-	-	-	-	-	-	-	-	-	-	-	-	-	-	-	-	-	-	-	-

Oct	Tu	W	Th	F	Sa	Su	M	Tu	W	Th	F	Sa	Su	M	Tu	W	Th	F	Sa	Su	M	Tu	W	Th							
2019	1	2	3	4	5	6	7	8	9	10	11	12	13	14	15	16	17	18	19	20	21	22	23	24	25	26	27	28	29	30	31
	-	-	-	-	-	-	-	-	-	-	-	-	-	-	-	-	-	-	-	-	-	-	-	-	-	-	-	-	-	-	

Nov	F	Sa	Su	M	Tu	W	Th	F	Sa	Su	M	Tu	W	Th	F	Sa	Su	M	Tu	W	Th	F	Sa							
2019	1	2	3	4	5	6	7	8	9	10	11	12	13	14	15	16	17	18	19	20	21	22	23	24	25	26	27	28	29	30
	-	-	-	-	-	-	-	-	-	-	-	-	-	-	-	-	-	-	-	-	-	-	-	-	-	-	-	-	-	-

 Reserved



# Holiday lettings Majorca - Balearic Islands "Familia Bauzá"

9

[Book now](#)

## Availability calendar - from : november 2019






Dec	Su	M	Tu	W	Th	F	Sa	Su	M	Tu	W	Th	F	Sa	Su	M	Tu	W	Th	F	Sa	Su	M	Tu							
2019	1	2	3	4	5	6	7	8	9	10	11	12	13	14	15	16	17	18	19	20	21	22	23	24	25	26	27	28	29	30	31
	-	-	-	-	-	-	-	-	-	-	-	-	-	-	-	-	-	-	-	-	-	-	-	-	-	-	-	-	-	-	-

Jan	W	Th	F	Sa	Su	M	Tu	W	Th	F	Sa	Su	M	Tu	W	Th	F	Sa	Su	M	Tu	W	Th	F							
2020	1	2	3	4	5	6	7	8	9	10	11	12	13	14	15	16	17	18	19	20	21	22	23	24	25	26	27	28	29	30	31
	-	-	-	-	-	-	-	-	-	-	-	-	-	-	-	-	-	-	-	-	-	-	-	-	-	-	-	-	-	-	

Reserved

[Month : Next >>](#)

## Rental rates - Flat-Apartments - from 1 to 4 Person(s)

Rates	Night	Weekend	week	2 weeks	Month
 Low season	Rs.4798* > 7	-	Rs.33586*	Rs.61574*	Rs.119949*
 Mid season	Rs.5438* ↓ > 7	-	Rs.38064*	Rs.70530*	Rs.136742*
 High season	Rs.7197* ↓ > 7	-	Rs.50379*	Rs.95160*	Rs.179924*
 Festive specials	-	-	-	-	Rs.155934*
 Promotional period	Rs.6397* ↓ > 7	-	Rs.44781*	Rs.83964*	Rs.167929*

↓ Reducing rates > Minimum Night

[Book now](#)



view from the balcony



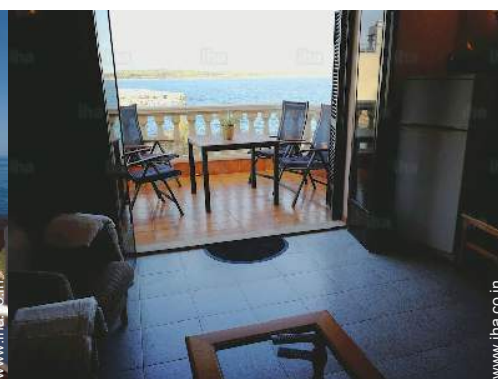
façade



dining room



view from the terrace



view from the flat

### Booking conditions

- **Reservation**

→ Payment made upon reservation :  
30% of rental sum

- **rentals**

→ Service charges included  
→ Day tax included

### Accepted methods of payment

- Bank transfer (wire)

▶ [Book now](#)

▶ [Contact the owner](#)

Contact directly the property owners

[www.iha.co.in](http://www.iha.co.in)  
Advert No.  
52282  
>> [Book now](#) <<

### Contact

Spoken  
languages



\* Converted at the rate indicated : €100 = \$116.85 = £89 = Rs.7996.6

Advert No. 52282

[www.iha.co.in](http://www.iha.co.in)

